

AMERICAN INTERNATIONAL SCHOOL OF JOHANNESBURG

HIGH SCHOOL PROFILE 2021-2022

OVERVIEW

- Founded **1982**
- Pre K to 12
- 71 Student Nationalities

854 Total Population
4 Divisions
2 Campuses
69 Countries

WHAT'S UNIQUE

Isithelo Project

The Isithelo Project is an intensive two-week project where a student focuses on a personal project, in grades 9 & 10.

The Zulu proverb: *Isihlahla saziwa ngezitelo zaso* means "a tree is known by its fruit". Isithelo is the isiZulu word for "fruit". Students design their project by specifying their success criteria they then manage the project. Each student has a faculty mentor who they meet twice a day.

The outcome of the Isithelo project has students exhibiting their work and seeking feedback from visitors to the exhibition. Students take part in a Viva Voce with their mentor and write a reflection of their learning journey.

PURPOSE

INSPIRE LEARNING AND BUILD OUR BETTER WORLD

The purpose of AISJ is to provide exceptional educational experiences in a diverse and nurturing environment in order to inspire learning and build our better world. We cultivate an inclusive community of learners so that we empower global citizens to fulfill their future purpose.

COMMUNITY PRINCIPLES

We are better when we act together.
Our differences make us stronger.

Every voice counts.
Every voice matters.

Every team needs individuals.
Every individual needs a team.

HS STUDENTS

289 Students enrolled in High School

26% American	3% Korean	2% Zimbabwean
12% South African	3% Canadian	41% Other
4% Brazilian	3% Indian	
4% British	2% Dutch	

HS GRADUATES & ACADEMICS

Class of 2022 has 74 seniors

95% of AISJ graduates continue on to institutions of higher learning. A significant majority of our students choose to pursue the challenge of the International Baccalaureate (IB) Diploma program. All IB courses are open to all students as individual courses or as part of the Diploma program. All students are required to complete .5 credit of Service for graduation.

TEACHERS

- There are **49** educators, **39** hold Master's Degrees and **3** hold Doctoral Degrees.
- Our teachers come from Belgium, Cameroon, Canada, Finland, France, India, South Africa, Spain, Switzerland, the United Kingdom, the United States of America, and Zimbabwe.

PORTRAIT OF AN AISJ LEARNER



SCHOOL DIRECTOR

Dr. Jeremy Moore
School Director
SchoolDirector@aisj-jhb.com

HS PRINCIPAL

Nicole Schmidt
High School Principal
HS-Principal@aisj-jhb.com

ASSISTANT PRINCIPAL

Dennis Ross
High School Assistant Principal
HS-AsstPrincipals@aisj-jhb.com

HS COUNSELORS

Melissa Johnson-Schnyder
High School Counselor
HS-Counselor@aisj-jhb.com

Taylor Cobb
High School Counselor
HS-Counselor@aisj-jhb.com

OFFICE ASSISTANTS

Tidi Magolego
JHB HS Student Services Coordinator
HS-Office@aisj-jhb.com

Cleopas Khumalo
Office Assistant
HS-Office@aisj-jhb.com

Thabile Mmola
JHB HS Secretary
HS-Office@aisj-jhb.com

CONTACT US

Private Bag X4, Bryanston, 2021,
South Africa
CEEB Code: 640582
IB Code: 0756
+27(0)11 464 1505
www.aisj-jhb.com

COVID-19 PANDEMIC



In the **2020-2021** school year, AISJ began the year with a staggered blended learning model with **63%** of our teachers on-campus.

By the start of **quarter 2** all but one of the High School teachers were on-campus. Many students were out of the country and distance learning continued for them until the start of **quarter 2**.

Subsequently, there were brief periods of online learning throughout the year. AISJ achieved **142** instructional days on-campus learning with limited access to extracurricular activities.

SAT | MIDDLE 50% RANGE

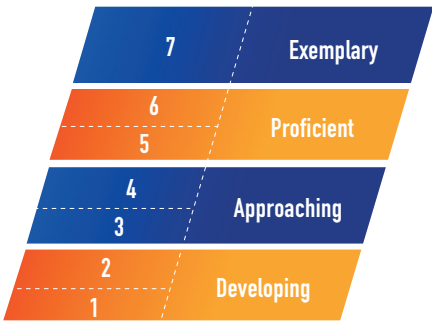
Please note: Approximately **15%** of students who take the SAT at AISJ are students who take English as a Second Language. Not all students sit the SAT as they apply to universities only requiring IB Diploma.



GRADING SYSTEM

AISJ has a **two** semester calendar year. First and second semester grades are recorded on the student's official transcript. Students are assessed for proficiency against assessment and reporting standards. A **1-7** grading scale mirrors the IB grading scale. Within this scale there are **4** mark bands reflecting AISJ reporting standards of **Exemplary (7), Proficient (6-5), Approaching (4-3)** and **Developing (2-1)**. A score of **2** is a passing grade, earning credit.

The Grading Scale (This is an un-weighted scale)



Exemplary

Always produces work of an excellent quality by fully meeting specific department and subject reporting standards.

Proficient

Usually produces work of a high quality and meets most specific department and subject reporting standards,

Approaching

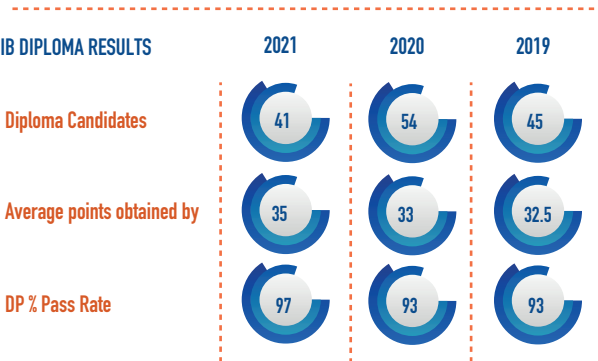
Usually produces work of a satisfactory quality and meets some of the specific department and subject reporting standards.

Developing

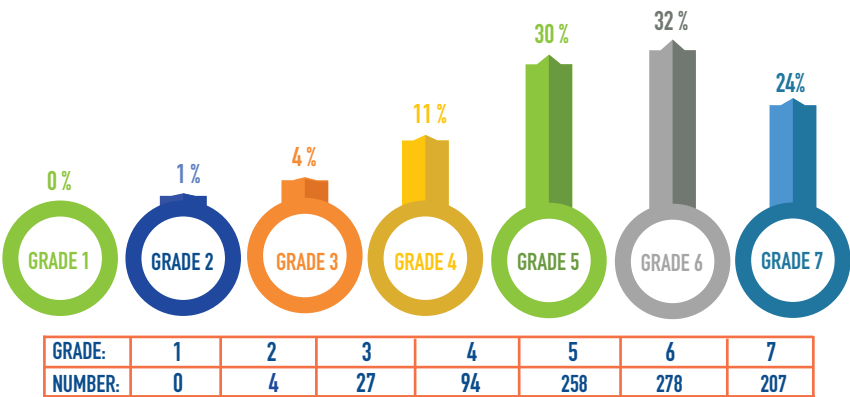
Produces work of an inconsistent quality but there is some attempt at meeting specific department and subject reporting standards.

INTERNATIONAL BACCALAUREATE RESULTS

24 point minimum needed to pass, maximum available points is **45**.
IB exam score range from **1 - 7** points per exam.



UN-WEIGHTED GRADE DISTRIBUTION FOR THE CLASS OF 2022 11th GRADE, 74 STUDENTS



UNIVERSITY & COLLEGE ACCEPTANCES (2019-2021)

AISJ Grade 12 students submit a maximum of 10 applications. University and colleges displayed in **BOLD** reflect at least one matriculation from the Class of 2019 - 2021 according to our student data.

AUSTRALIA



Western Sydney University
The University of Queensland

BELGIUM



Katholieke Universiteit Leuven
Universiteit Ghent

CANADA



Brock University
Dalhousie University
Douglas College
Lakehead University
McMaster University
OCAD University
Ontario Tech University
Simon Fraser University
The University of British Columbia
Trent University
University of Alberta
University of Calgary
University of Ontario Institute of Technology
University of Ottawa
University of Toronto
University of Victoria
University of Waterloo
Wilfrid Laurier University

CZECH REPUBLIC



Charles University In Prague

DENMARK



DANIA University of Applied Sciences
VIA University College

FINLAND



Häme University of Applied Sciences (HAMK)

FRANCE



College Universitaire de Sciences Po
ESSEC Business School
École Polytechnique

GERMANY



University College Twente

GREECE



American College of Greece

IRELAND



University College Dublin

ITALY



The American University of Rome

JAPAN



Sophia University

KOREA



Yonsei University

MEXICO



Panamerican University

NETHERLANDS



Amsterdam University College
Amsterdam University of Applied Sciences
Erasmus University Rotterdam
Hanze University of Applied Sciences, Groningen
University of Groningen
Leiden University
Maastricht University

The Hague University of Applied Sciences
Universiteit Utrecht

University College Utrecht
University of Amsterdam
University of Maastricht
University of Twente
Utrecht University
Wageningen Universiteit
Webster University Leiden

SOUTH AFRICA



Tshwane University of Technology
University of Cape Town
University of South Africa
University of Stellenbosch
University of the Witwatersrand

SPAIN



IE University
Inholland University of Applied Sciences
ESADE Business School
European Business School Barcelona

SWITZERLAND



Les Roches International School of Hotel Management
European Business School Montreux
University of Zurich
Webster University Geneva

UNITED KINGDOM



Bournemouth University
Brunel University London
Cardiff University
City, University of London
Coventry University
Durham University
Edinburgh Napier University
Heriot-Watt University
Hult International Business School
King's College London, University of London
Leeds Beckett University
London School of Economics and Political Science, - (University of London)
Loughborough University
MetFilm School
Middlesex University
Newcastle University
Northumbria University, Newcastle
Nottingham Trent University
Oxford Brookes University
Queen Mary University of London
Queen's University (Faculty of Applied Science)
Queen's University Belfast
Royal Holloway, University of London
Staffordshire University
The University of Edinburgh
University College London (UCL)
University of Bath
University of Birmingham
University of Brighton
University of Dundee
University of East London
University of Essex
University of Exeter
University of Glasgow
University of Hull
University of Kent
University of Leeds
University of Leicester
University of Lincoln
University of Liverpool
University of Manchester
University of Nottingham
University of Plymouth
University of Reading
University of Salford
University of Sheffield
University of Surrey
University of Warwick
University of Westminster
University of York

University of the Arts London
Queen Mary University of London
University of Southampton
University of Stirling

UNITED STATES OF AMERICA



AMDA College and Conservatory of the Performing Arts, Los Angeles Campus
Appalachian State University
Arizona State University-Tempe
Auburn University
Barnard College
Bethany Lutheran College
Boston University
Brigham Young University
Brigham Young University-Hawaii
Brigham Young University - Provo
Brigham Young University - Idaho
Bryn Mawr College
California State University-Sacramento
Calvin College
Carleton University
Carnegie Mellon University
Carroll Community College
Case Western Reserve University
Central Michigan University
Chapman University
Clark University
Colorado School of Mines
Columbia College
Concordia University
Connecticut College
DePaul University
DigiPen Institute of Technology
Drew University
Drexel University
East Carolina University
Emerson College
Emory & Henry College
Emory University
Fairleigh Dickinson University - Florham Campus
Fairleigh Dickinson University - Metropolitan Campus
Florida Institute of Technology
Florida State University (College of Arts & Sciences)
Fordham University at Rose Hill
Frostburg State University
George Mason University
George Washington University
Georgetown University
Grinnell College
Hamline University
Hofstra University
Howard University
Hult International Business School
Indiana University at Bloomington
Iowa State University
James Madison University
Johns Hopkins University
Johnson & Wales University-Providence
Lehigh University
Lewis & Clark College
Louisiana State University and Agricultural & Mechanical College
Loyola Marymount University
Lynn University
Mills College
Minnesota State University-Mankato
Montana State University, Bozeman
Morehouse College
New York University
Northeastern University
Old Dominion University
Otis College of Art and Design
Pace University, New York City
Pennsylvania State University
Pepperdine University
Pratt Institute-Main
Purdue University (College of Engineering)
Purdue University Fort Wayne
Purdue University-Main Campus
Queens College of the CUNY
Quinnipiac University
Radford University
Randolph-Macon College
Ringling College of Art and Design
Rowan University
Rutgers University-New Brunswick

Saint Edward's University
Santa Monica College
Savannah College of Art and Design
School of the Art Institute of Chicago
School of Visual Arts
Seton Hall University
Snow College
St Olaf College
St. John's University
Stevenson University
Suffolk University
SUNY at Albany
SUNY at Purchase College
Syracuse University (College of Engineering & Comp. Science)
Temple University
Texas State University
The New School
The University of Iowa
The University of North Carolina at Chapel Hill
The University of Tampa
The University of Texas at Austin
The University of Texas at San Antonio
Troy University
Tulane University (Tulane College of Liberal Arts & Sciences)
University of Arizona
University of California-Berkeley
University of California-Irvine
University of California-Los Angeles
University of California-Merced
University of California-Riverside
University of California-San Diego
University of California-Santa Barbara
University of California-Santa Cruz
University of California, Davis
University of Chicago
University of Colorado at Boulder (College of Engineering & Applied Science)
University of Denver
University of Florida
University of Illinois At Urbana-Champaign
University of Kentucky
University of Lynchburg
University of Maine
University of Maryland-Baltimore County
University of Maryland-College Park
University of Massachusetts-Boston
University of Massachusetts, Amherst (Isenberg School of Management)
University of Miami
University of Michigan-Ann Arbor
University of Minnesota, Twin Cities (CSE College of Science and Engineering)
University of New England
University of New Hampshire-Main Campus
University of North Carolina at Asheville
University of North Carolina At Chapel Hill
University of Notre Dame
University of Oregon
University of Pennsylvania
University of Pittsburgh-Pittsburgh Campus
University of San Diego
University of Sioux Falls
University of South Alabama
University of South Dakota
University of South Florida, Tampa
University of Vermont (College of Engineering & Mathematics)
University of Victoria
University of Virginia-Main Campus
University of Wisconsin-Madison
University of Wyoming
Utah State University
Utah Valley University
Virginia Polytechnic Institute and State University
Washington College

QATAR

Northwestern Qatar
University of Qatar



2019-2022

COURSE OFFERINGS

ENGLISH

- English ELL 1/ELL 2 (English Language Learning)
- ELL Support
- English 9/10
- IB English A Lang & Lit HL/SL
- HSP English
- English 11/12
- IB School Supported Self-Taught Language A Literature SL

LANGUAGE AQUISITION

- IB English B HL/SL
- French or Spanish (Beginner, Pre-Intermediate)
- French or Spanish (Intermediate, Advanced)
- IB French or Spanish Ab Initio SL only
- IB French or Spanish B HL/SL

MATHEMATICS

- Integrated Math I, II, III
- Integrated Math III Advanced
- IB Math (HL/SL, Studies SL)
- Applied Math 11/12
- HSP Math
- IB Math Applications HL/SL
- IB Math Analysis HL/SL

SCIENCE

- Science 9/10
- IB Chemistry HL/SL
- IB Biology HL/SL
- IB Physics HL/SL
- IB Environmental Systems & Societies SL
- IB Sport Exercise Health Sciences HL/SL
- IB Computer Science HL/SL
- Applied Science 11/12
- HSP Science and Technology

SOCIAL STUDIES

- Social Studies 9/10
- Global Issues 11/12
- International Relations
- IB Economics HL/SL
- IB History HL/SL
- IB Geography HL/SL
- IB Environmental Systems & Societies SL
- IB Global Politics HL/SL

TECHNOLOGY

- Computer & Technology Design
- Discover Computer Science
- Cyber Security
- Robotics 1
- Robotics 2
- Tech Crew

ARTS

- Visual Art: Artist
- Visual Art: Defining Visual Art
- HS Visual Arts
- HS Theatre
- Digital Arts
- Theatre: Actor
- Theatre: Story
- Theatrical Production & Design
- Musical Theatre
- Filmmaking
- Photography 1
- Photography 2
- Band
- Choir
- Discover Animation
- Performance and Film Production
- IB Visual Arts HL/SL
- IB Music HL/SL
- IB Theatre HL/SL
- IB Theatre HL/SL
- IB Film HL/SL
- IB Film HL/SL

PHYSICAL EDUCATION / HEALTH

- PE 9/10
- PE 11/12
- Wellness

CORE

- IB Theory of Knowledge I & II
- IB Core
- Inkonzio
- Global Citizens/Mission 9

